

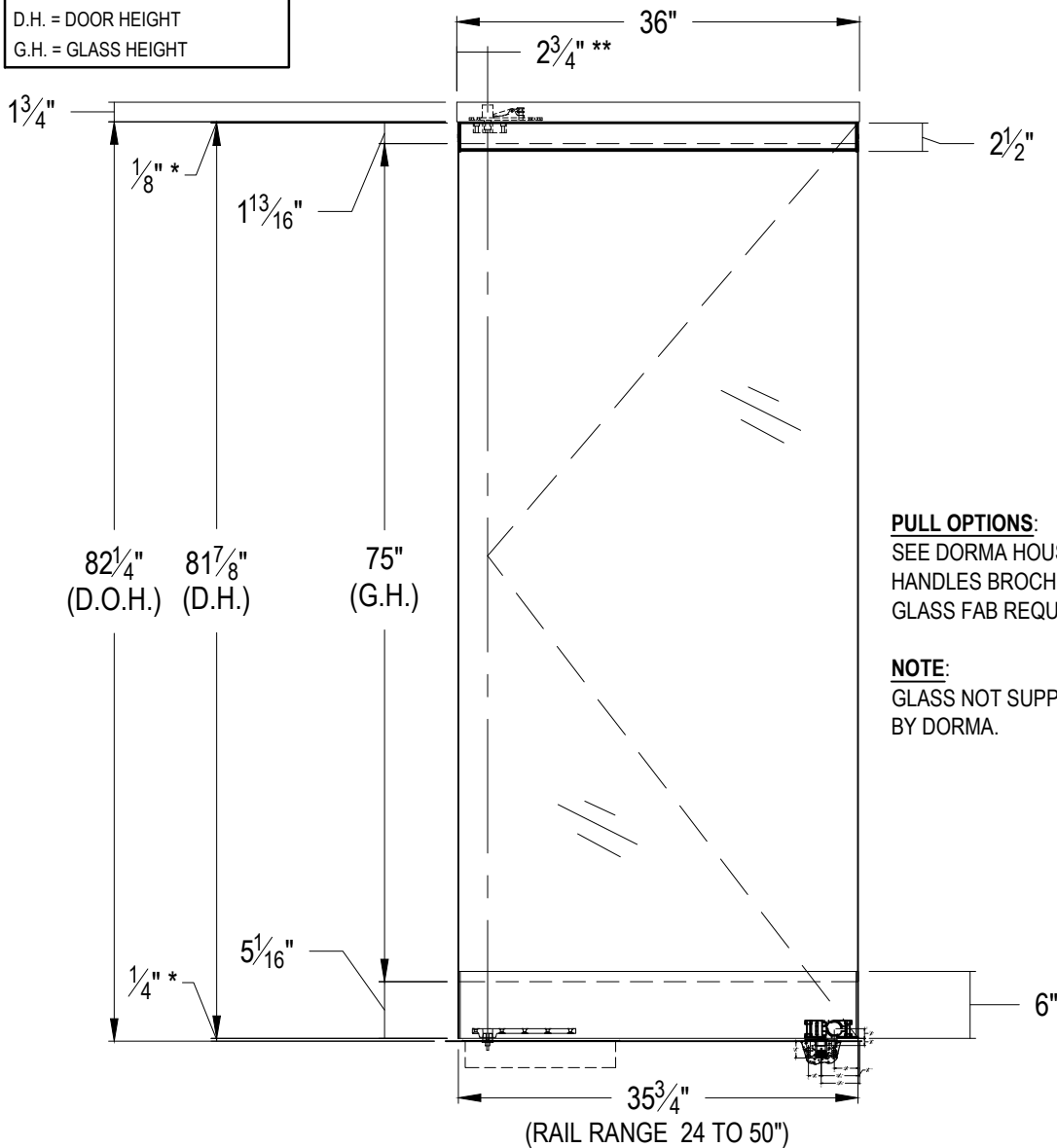
**KEY:**

D.O.H. = DOOR OPENING HEIGHT

D.H. = DOOR HEIGHT

G.H. = GLASS HEIGHT

(HEADER RANGE 24" TO 50")

**ART. NO. P02S.75.219 (SHOWN)****SINGLE DOOR SYSTEM****FOR  $\frac{3}{4}"$  GLASS INCLUDES...**

- QTY. 1 - #233.036  $4\frac{1}{8}"$  HEADER WITH #801.117 WALKING BEAM PIVOT
- QTY. 1 - #234.205  $2\frac{1}{2}"$  TOP RAIL WITH #904.610 INSERT
- QTY. 1 - #225.159 6" BOTTOM RAIL WITH #227.002 ARM AND #925.019 LOCK
- QTY. 1 - #927.020 BTS CLOSER
- QTY. 1 - #927.091  $\frac{5}{16}"$  SPINDLE
- QTY. 1 - #227.003 COVER PLATE
- QTY. 1 - #225.998 MORTISE THUMBTURN CYLINDER WITH SPLIT RING
- QTY. 1 - #225.999 MORTISE KEY CYLINDER WITH SPLIT RING
- QTY. 1 - #932.033  $1\frac{1}{2}"$  DUST PROOF STRIKE

**ART. NO. P02S.75.219.X****PAIRED DOOR SYSTEM****FOR  $\frac{3}{4}"$  GLASS INCLUDES...**

- QTY. 1 - #233.038  $4\frac{1}{8}"$  HEADER WITH #801.117 WALKING BEAM PIVOTS
- QTY. 2 - #234.205  $2\frac{1}{2}"$  TOP RAIL WITH #904.610 INSERT
- QTY. 2 - #225.159 6" BOTTOM RAIL WITH #227.002 ARM AND #925.019 LOCK
- QTY. 2 - #927.020 BTS CLOSER
- QTY. 2 - #927.091  $\frac{5}{16}"$  SPINDLE
- QTY. 2 - #227.003 COVER PLATE
- QTY. 2 - #225.998 MORTISE THUMBTURN CYLINDER WITH SPLIT RING
- QTY. 2 - #225.999 MORTISE KEY CYLINDER WITH SPLIT RING
- QTY. 2 - #932.033  $1\frac{1}{2}"$  DUST PROOF STRIKE

\* OPENING CLEARANCES MAY VARY BASED ON SITE CONDITIONS. STANDARD CLEARANCES OF  $\frac{1}{8}"$  USED UNLESS OTHERWISE INDICATED.

\*\* PIVOT POINT CENTER LINE IS FROM FINISHED JAMB.



1520 Jabez Run  
Suite 303  
Millersville, MD 21108  
800.451.0649

REV.	DATE
	08/19/16

**TOLERANCES**  
UNLESS OTHERWISE SPECIFIED:DECIMAL .XXX =  $\pm .005$ .XX =  $\pm .01$ FRACTION  $\pm \frac{1}{16}$ DEGREE  $\pm .3^\circ$ 
**DORMA EASI-FRONTS DOOR SET**  
**TYPE "P" WITH LOCK - P75-6S-2S-01\_41-BTS**

**PROPRIETARY AND CONFIDENTIAL**

This document and information is the proprietary property of DORMA GLASS. Any party, by accepting this document and information, assumes custody and control hereof and agrees that such is given in confidence and this document and the information set forth therein will not be copied, used or reproduced in whole or in part, nor its contents revealed to any person in any manner that would cause the loss or impairment of the owner's legal rights including, but not limited to, the owner's common law copyrights thereto.

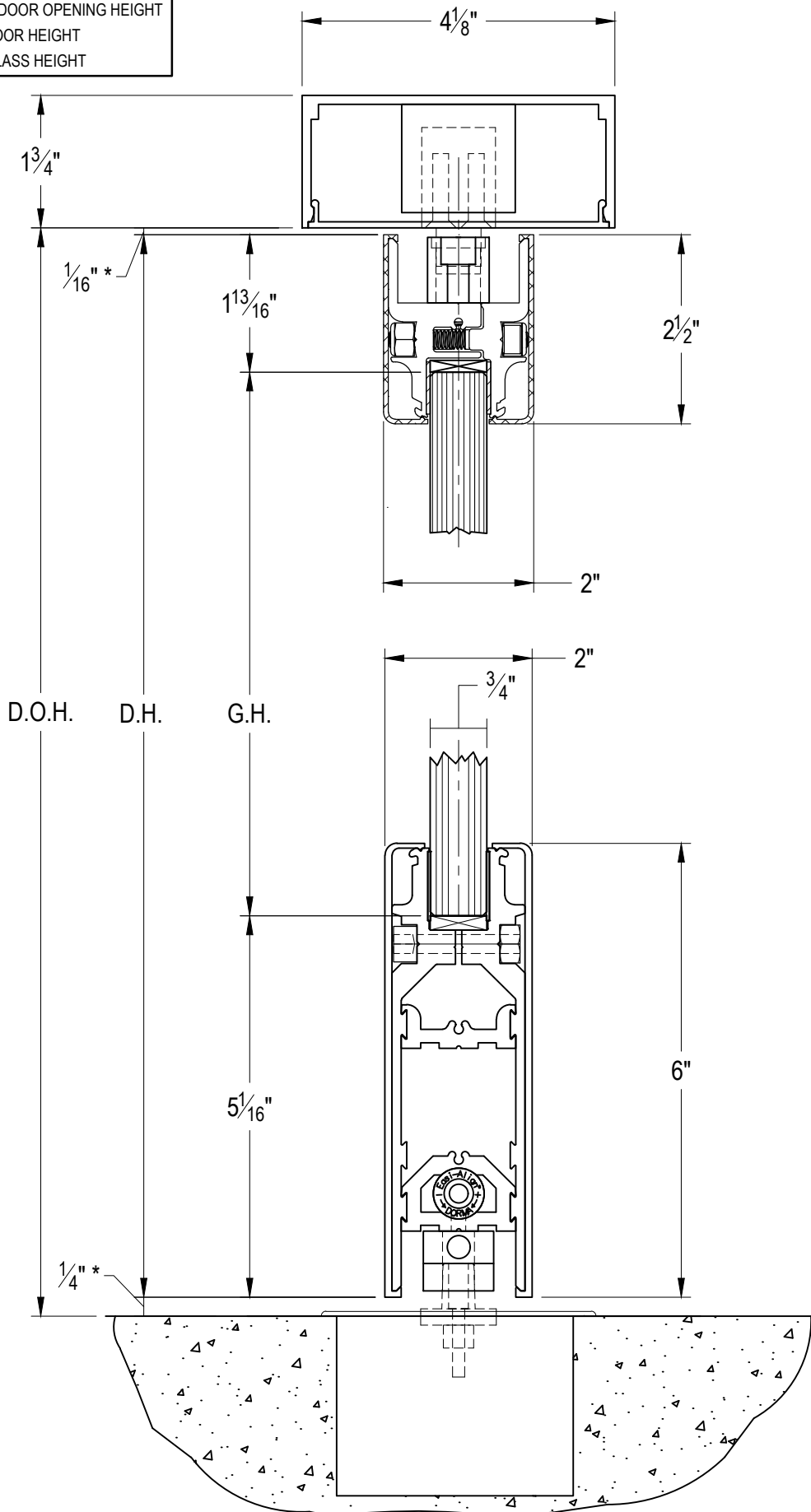
DRAWN BY: JA
DATE: 08.11.15
SCALE: $\frac{3}{4}"=1'-0"$
SHEET: 1 OF 3
DRAWING NO. P75-6S-2S-01_41-BTS
DO NOT SCALE DRAWING

**KEY:**

D.O.H. = DOOR OPENING HEIGHT

D.H. = DOOR HEIGHT

G.H. = GLASS HEIGHT



\* OPENING CLEARANCES MAY VARY BASED ON SITE CONDITIONS. STANDARD CLEARANCES SHOWN ARE USED IN FORMULA.



1520 Jabez Run  
Suite 303  
Millersville, MD 21108  
800.451.0649

REV.	DATE
△	08/19/16

**TOLERANCES**  
UNLESS OTHERWISE SPECIFIED:

DECIMAL .XXX = ± .005

.XX = ± .01

FRACTION 1/16

DEGREE ± 3°

# DORMA EASI-FRONTS DOOR SET TYPE "P" WITH LOCK - P75-6S-2S-01\_41-BTS

**PROPRIETARY AND CONFIDENTIAL**

This document and information is the proprietary property of DORMA GLASS. Any party, by accepting this document and information, assumes custody and control hereof and agrees that such is given in confidence and this document and the information set forth therein will not be copied, used or reproduced in whole or in part, nor its contents revealed to any person in any manner that would cause the loss or impairment of the owner's legal rights including, but not limited to, the owner's common law copyrights thereto.

DRAWN BY: JA
DATE: 08.11.15
SCALE: 1:2
SHEET: 2 OF 3
DRAWING NO. P75-6S-2S-01_41-BTS
DO NOT SCALE DRAWING

**KEY:**

D.O.H. = DOOR OPENING HEIGHT

D.H. = DOOR HEIGHT

G.H. = GLASS HEIGHT



1520 Jabez Run  
Suite 303  
Millersville, MD 21108  
800.451.0649

REV.	DATE
	08/19/16

**TOLERANCES**  
UNLESS OTHERWISE SPECIFIED:

DECIMAL .XXX = ± .005

.XX = ± .01

FRACTION ± 1/16

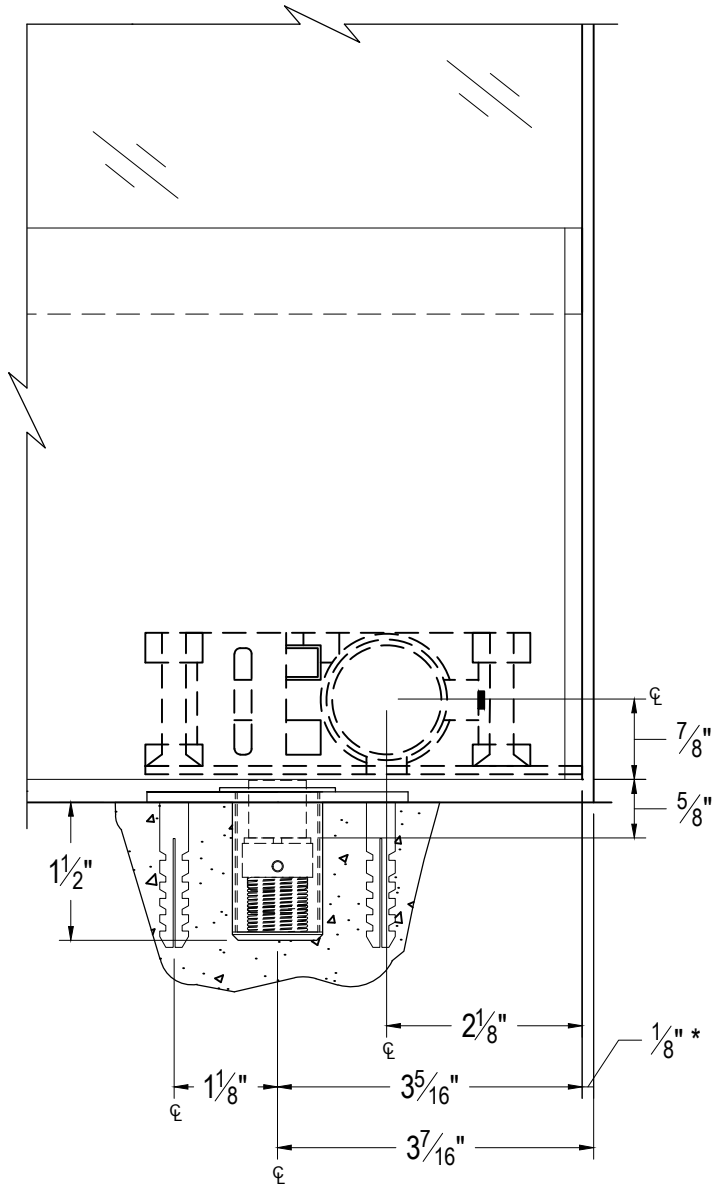
DEGREE ± 3°

# DORMA EASI-FRONT'S DOOR SET TYPE "P" WITH LOCK - P75-6S-2S-01\_41-BTS

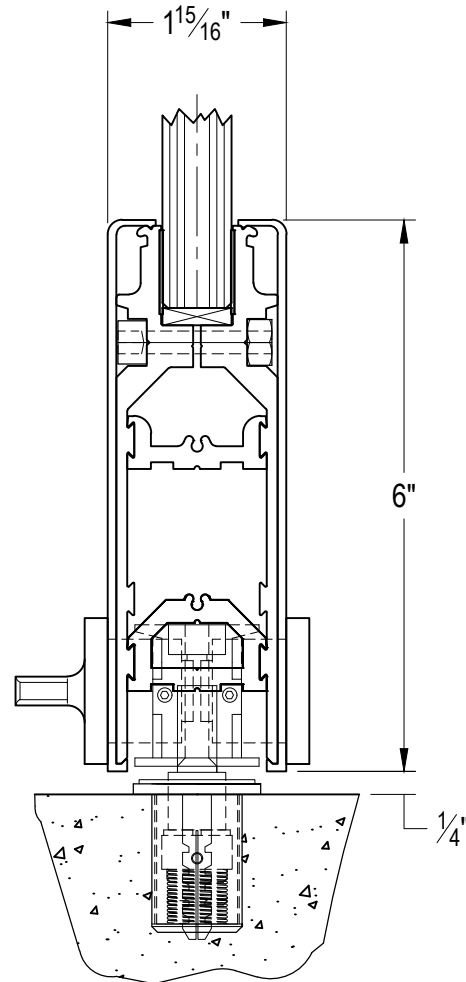
PROPRIETARY AND CONFIDENTIAL

This document and information is the proprietary property of DORMA GLASS. Any party, by accepting this document and information, assumes custody and control hereof and agrees that such is given in confidence and this document and the information set forth therein will not be copied, used or reproduced in whole or in part, nor its contents revealed to any person in any manner that would cause the loss or impairment of the owner's legal rights including, but not limited to, the owner's common law copyrights thereto.

DRAWN BY: JA
DATE: 08.11.15
SCALE: 1:2
SHEET: 3 OF 3
DRAWING NO. P75-6S-2S-01_41-BTS
DO NOT SCALE DRAWING



ELEVATION VIEW OF LOCK LOCATION



BOTTOM RAIL SECTION  
AT LOCK LOCATION

NOTE: DIMENSIONS SHOWN INCLUDE THE ENDCAP AND THE COVER.

\* OPENING CLEARANCES MAY VARY BASED ON SITE CONDITIONS. STANDARD CLEARANCES SHOWN ARE USED IN FORMULA.